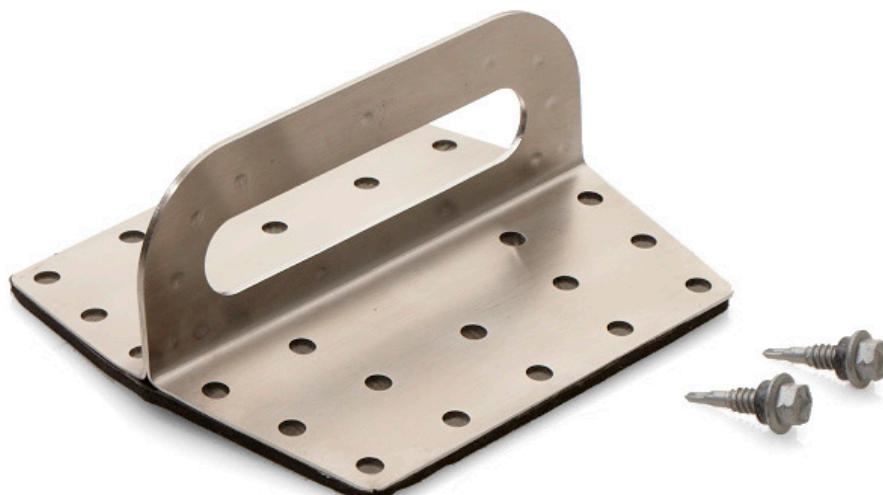




The RD08 standing rib profile 360° fall restraint/fall arrest roof anchor.



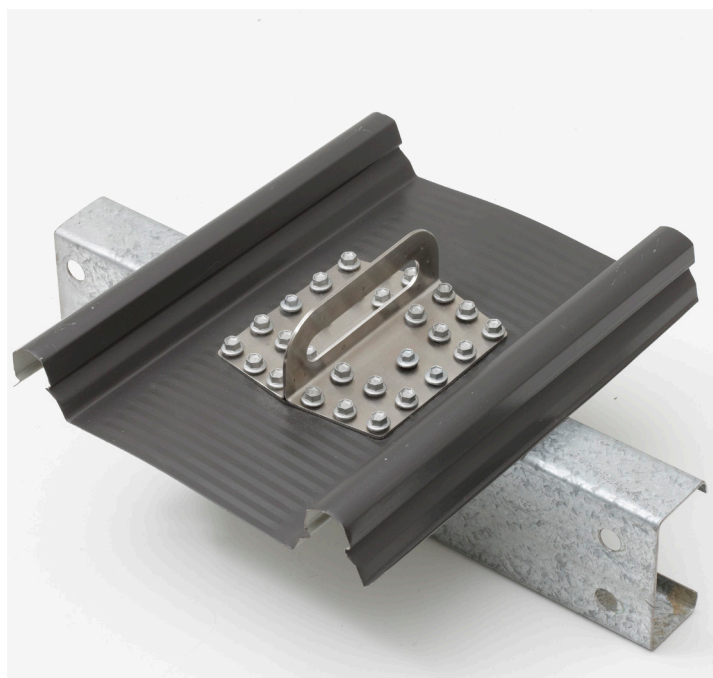
Product Description

A surface mounted stainless steel roof anchor to suit square rib metal roof profile sheeting with a minimum base metal thickness (BMT) of 0.42mm. The roof sheeting should be continually spanning a minimum five metal battens, purlins or timber roof battens (MGP10, 75mm x 34mm minimum).

The roof sheeting should be fixed to a structure that is capable of taking expected loads.

LIMITATIONS:

The anchor is NOT to be utilised by more than one person at any time in accordance with AS/NZS 1891.4 (Table 3.1). Do not use if the anchor does not firmly fit the roof sheet profile or flat on the roof deck between ribs. The anchor is strength rated to 15kN for single person use only. The anchor is NOT to be used for fastening/tethering other items such as TV antennae, satellite dishes, solar panels, shade structures etc.



Technical Data

Weight: 200 Grams (without fixings)
 Dimensions: 135mm x 152mm nominal foot print
 Fixings: **Timber:**
 4 off M5.5 x 50mm Hex Head HG Seal Zips;
 24 off 15-15x25mm Hex Head HG Seal 'MBTeks'
Metal:
 4 off M5.5 x 40mm Hex Head HG Seal Zips;
 24 off 15-15x25mm Hex Head HG Seal 'MBTeks'

COMPOSITION AND MATERIALS:

The 'RD-08' is composed of 304 Stainless Steel in a mill finish. The 'RD-08' utilises twenty four (24) off 25mm long metal batten 'teks' & four (4) off M5.5 x 40mm and is surface mounted with a waterproof, self adhering EPDM foam separation strip.

APPLICABLE STANDARDS:

Complies with Australian/New Zealand Standard 1891.4 (2000) – 15kN for single person attachment.

Maintenance

The RD08 must be checked, recorded and identified annually at the by a 'competent' person as required and/or detailed in Government OH&S Acts, Codes of Practice and all applicable building codes. The RD08 must also be checked prior to any attachment or use ensuring that the anchor has not been subject to any fall loads nor that it has been tampered with. Ensure that the RD08 is firmly attached to the roof, not loose, using of all screw fixings as detailed in Item 4. Technical Data (noted above) and with no other attachments fixed to the anchor. Ensure all safety equipment to be used in conjunction with the RD08 is checked prior to use.

Distribution by:
Shingles Supply Pty Ltd
 Australia & International
 Order: 1300 131 881
 Enquires: +61 2 9317 3553
 PO Box 1346 Moss Vale NSW 2577
shinglessupply.com.au



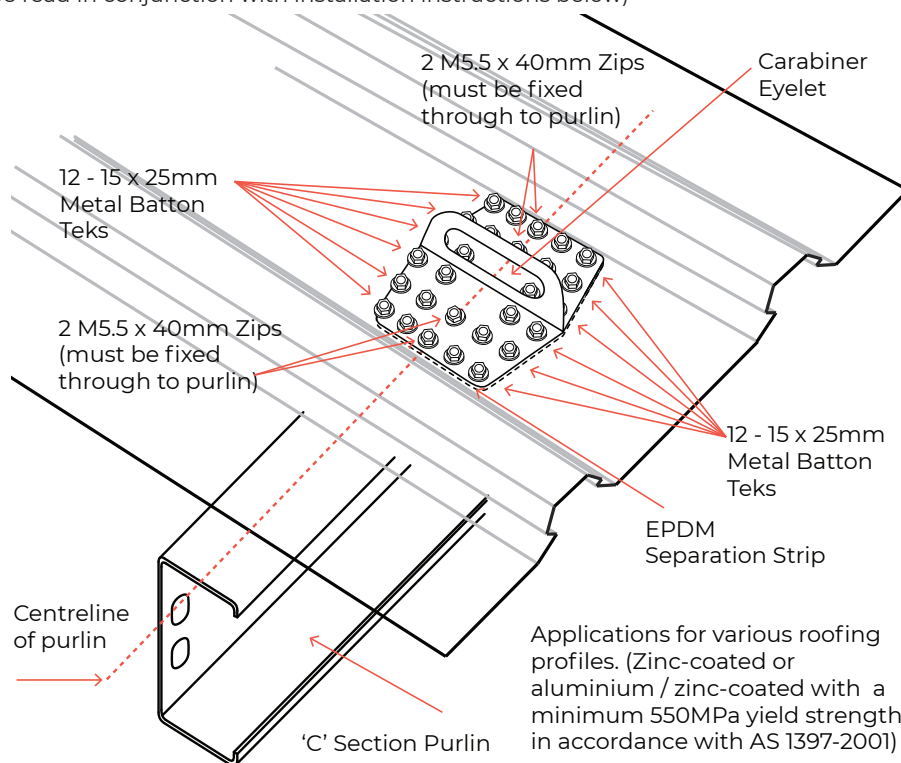
**SHINGLES
SUPPLY**

Roofing products & safety equipment



Fixing Diagram

(To be read in conjunction with installation instructions below)



FIXING NOTES:

- Place RD-08 in the pan between two ribs with the centre four holes placed along the centre of the purlin or batten.
- The RD-08 is fixed into a purlin/batten laterally through the centre four holes with the M5.5 x 40mm Batten Tekes or Zips.
- The EPDM separation strip adhered to the underside of RD-08 must be in place when fitting the anchor.
- All remaining Twenty Four (24) holes of the RD-08 must be fixed with the 25mm metal batten tekas.
- Ensure that all screws are firmly fixed but NOT overtightened with all washers intact under the heads of the screws.

Installation instructions

Following is a general summary of the installation method. If there is any doubt as to the surety or application of this anchor please contact Secure Anchor Systems.

ROOF REQUIREMENTS:

Apply the RD08 to an insulated trapezoidal metal roof of flat roof profile fixed in accordance with the roof sheet manufacturer's instructions, all applicable building codes, engineering design and Australian Standards. A roof sheet with minimum base metal thickness of 0.42mm (with a minimum 550MPa yield strength in accordance with AS 1397-2001) must be utilised to ensure fall arrest along the sheet when installed in accordance with these instructions.

APPLICATION & FASTENING ON ROOFSHEETS: TO TIMBER BATTENS OR METAL PURLINS:

The four (4) M5.5 x 40mm Zips are required to be used through the centre four holes in the anchor with the remaining twenty four (24) x 15-15x25mm Hex Head HG Seal 'Metal Batten Tekes' and across all holes fixing into the roof sheet. Ensure that the screws are secured firmly against the anchor and the roof sheet so there is no movement. DO NOT over tighten the screws as this may strip the thread and compromise the screw's holding power and shear strength in the event of a fall. We suggest using a torque setting commonly available on cordless drills.

NOTE:

Fix anchor using the M5.5 x 40mm Zips through the batten or purlin first to pull the anchor down. Then start fixing the anchor in place with the batten tekas from the inside out to the perimeter of the anchor using a torque setting on your drill. When the last screw is fixed, run over the screws again to ensure tightness as the anchor is compressed with each screw application.

DO NOT use existing roof screws to fasten the 'RD-08'. DO NOT use any other screws than those supplied or specified above. DO NOT reuse any screws nor the holes of an existing application if a 'RD-08' is removed and re-installed. The anchor is NOT to be used

for fastening/tethering other items such TV antennae, satellite dishes, solar panels, shade structures etc...

FLASHING:

Make sure that the EPDM flashing/separation is fixed between the roof sheeting and the stainless steel fabric of the roof anchor ensuring a tight waterproof seal. This must also be placed to ensure no reaction will occur between the stainless steel anchor and the Colorbond or Zinalume roof sheeting.

The 'RD-08' requires no additional flashings or sealing other than the application of the enclosed self adhering EPDM foam seal/separation strip. You may apply a bead of sealant around the perimeter of the anchor if there is any unsurety as to water resistance.

Secure Anchor Systems recommends that all anchor installers & users be 'competent' in accordance with AS 1891, relevant Codes of Practice and applicable OH&S acts in your state.

Secure Anchor Systems always recommends placement of anchors using a 'fall restraint' methodology and working in a 'fall restraint' mode when working at heights.

Distribution by: Shingles Supply Pty Ltd

Australia & International
Order: 1300 131 881
Enquires: +61 2 9317 3553
PO Box 1346 Moss Vale NSW 2577

shinglessupply.com.au



**SHINGLES
SUPPLY**

Roofing products & safety equipment