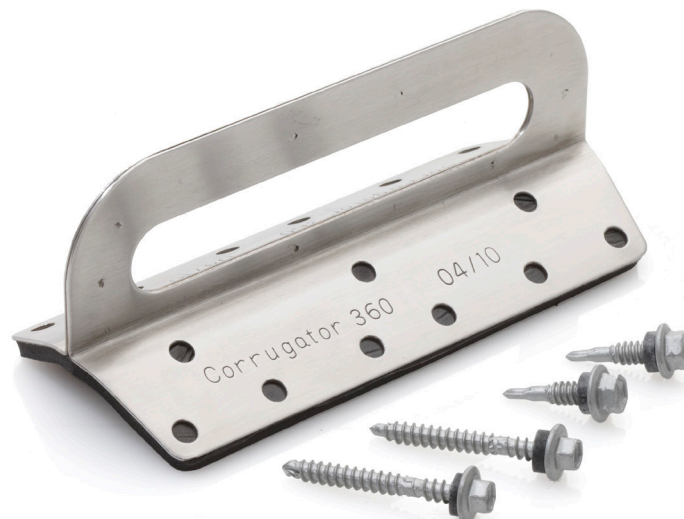


The Corrugator™
360 degree
corrugated iron fall
arrest roof anchor.



Product Description

A surface mounted stainless steel roof anchor to suit standard corrugated iron roof sheeting with a minimum base metal thickness (BMT) of 0.42mm continually spanning a minimum three battens providing height safety in fall arrest and restraint applications.

LIMITATIONS:

The anchor is not to be utilised by more than one person at any time nor be subject to a load of more than 15kN in accordance with AS/NZS 1891.4 (Table 3.1).

APPLICABLE STANDARDS:

Australian/New Zealand Standard 1891.4



Technical Data

Weight (approx.):	250 Grams
Dimensions (overall):	175mm x 70mm x 75mm nominal
Screw Fixings:	Timber: 4 off M6x50mm Hex Head HG Seal C4 'Roof Zips'; 14 off 15-15x25mm Hex Head HG Seal 'Metal Batten Tek's'
	Metal: 4 off M6x40mm Hex Head HG Seal C4 'Roof Zips'; 14 off 15-15x25mm Hex Head HG Seal 'Metal Batten Tek's'

COMPOSITION AND MATERIALS:

The Corrugator™360 is composed of 304 Stainless Steel in either a mill finish or powdercoated. The Corrugator™360 utilises 18 screws to surface mount the anchor with an EPDM, self adhering separation strip.

Maintenance

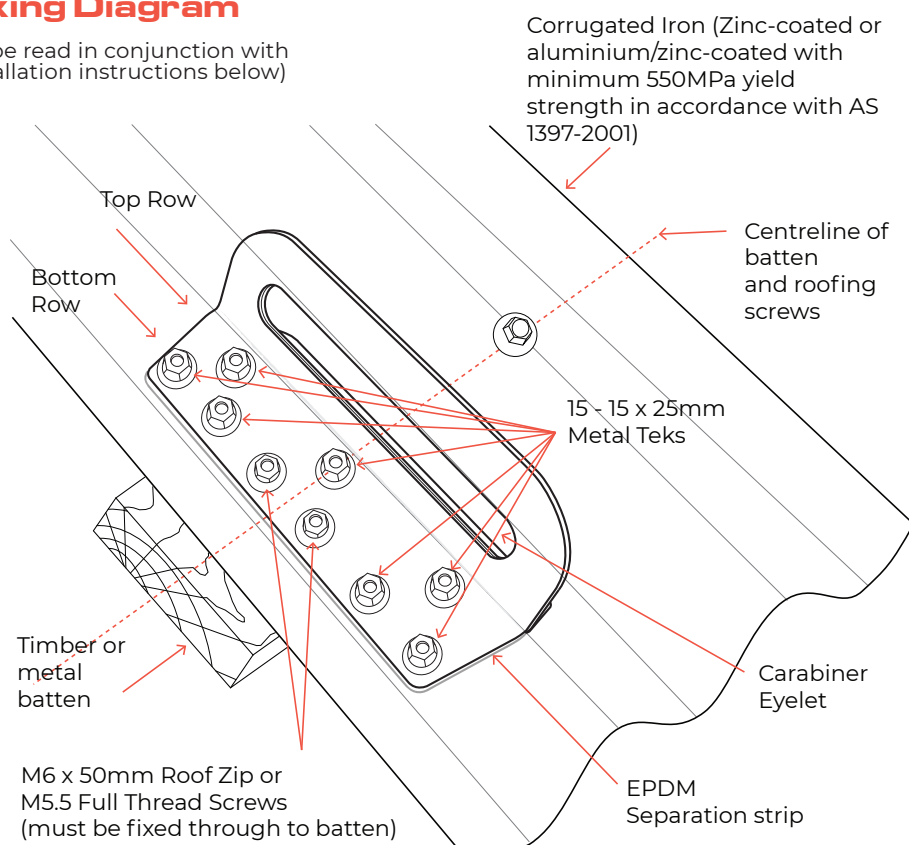
The Corrugator™360 should be checked annually at the very least by a 'competent' person as required and/or detailed in Government OH&S Acts, Codes of Practice and all applicable building codes. The Corrugator™360 must also be checked prior to any attachment or use ensuring that the anchor has not been subject to any fall loads nor that it has been tampered with. Ensure that The Corrugator™360 is firmly attached to the roof and not loose with the use of all screw fixings as detailed in Technical Data above. Ensure all safety equipment to be used in conjunction with The Corrugator™360 is checked prior to use.

Distribution by:
Shingles Supply Pty Ltd
Australia & International
Order: 1300 131 881
Enquires: +61 2 9317 3553
PO Box 1346 Moss Vale NSW 2577
shinglessupply.com.au



Fixing Diagram

(To be read in conjunction with installation instructions below)



FIXING NOTES:

- Place *The Corrugator™360* on a ridge of the corrugation between existing roofing screws across a roof batten.
- The separation strip adhered to the underside of *The Corrugator™360* must be in place when fitting the anchor.
- Fix Six (6) 25mm Metal Batten Tek's along the Top Rows (each side of eyelet) FIRST to ensure a snug fit over top of corrugation.
- *The Corrugator™360* MUST be fixed into the batten with the four (4) Roof Zips through the centre two holes of the Bottom Rows. The remaining eight (8) holes along the bottom rows must be fixed with the remaining 25mm metal batten teks.
- Ensure that all screws are firmly fixed but NOT overtightened with all washers intact under the heads of the screws.

Installation Instructions

Following is a general summary of the installation method. If there is any doubt as to the surety or application of this roof anchor please contact Secure Anchor Systems.

ROOF REQUIREMENTS:

Apply *The Corrugator™360* to a corrugated iron roof fixed in accordance with the roof sheet manufacturer's instructions, all applicable building codes and Australian Standards. A roof sheet with minimum base metal thickness of 0.42mm (with a minimum 550MPa yield strength in accordance with AS 1397-2001) must be utilised and continually span across three battens for *The Corrugator™360* to ensure fall arrest when installed in accordance with these instructions.

APPLICATION & FASTENING:

Eighteen (18) screws are required to be used on *The Corrugator™360* roof anchor. Nine holes across two rows are placed along either side of the anchor stem containing the eyelet. Four (4) M6 x 50mm Roof Zips are required to be fastened through the middle hole along the base line on either side of the anchor into a roofing batten that has a minimum strength grade of MGP10. Place the anchor over a corrugation between an existing line of screw fixings in the roof sheet. DO NOT remove an existing screw fixing and place the anchor in that same position utilising the existing hole. With the remaining Fourteen (14) Metal Batten Tek screws, fix them through the remaining holes into the roof sheet.

When fixing *The Corrugator™360* in place, fix the two upper rows (6 x metal batten teks) along the crest of the corrugation first, then fix the lower rows on either side towards the valleys of the sheets. This will enforce a closer fit to the profile of the corrugated iron.

Ensure that the Metal Batten Tek's are secured firmly against the anchor and the roof sheet so there is no movement. DO NOT over tighten the screws as this may strip the thread and compromise the screw's holding power and shear strength in the event of a fall. We suggest using a torque setting commonly available on

cordless drills.

DO NOT use/reuse existing roof screws to fasten *The Corrugator™360*. DO NOT use any other screws than those supplied or specified above. DO NOT reuse any screws nor the holes of an existing application if a *The Corrugator™360* is removed.

FLASHING:

Make sure that the EPDM flashing/separation is fixed between the roof sheeting and the stainless steel fabric of the roof anchor ensuring a tight waterproof seal. This must also be placed to assist in preventing galvanic reaction between the stainless steel anchor body and the Colorbond or Zinalume sheeting.

The Corrugator™360 requires no additional flashings nor sealing other than the application of the enclosed EPDM self adhering sealing/separation strip. You may apply a bead of sealant around the perimeter of the anchor if there is any unsurety as to water resistance.

Secure Anchor Systems recommends that all anchor installers & users be 'competent' in accordance with AS 1891, relevant Codes of Practice and applicable OH&S acts in your state.

Secure Anchor Systems always recommends placement of anchors using a 'fall restraint' methodology and working in a 'fall restraint' mode when working at heights.

Distribution by:
Shingles Supply Pty Ltd

Australia & International
Order: 1300 131 881
Enquires: +61 2 9317 3553
PO Box 1346 Moss Vale NSW 2577

shinglessupply.com.au



SHINGLES SUPPLY

Roofing products & safety equipment