

A ladder bracket with a twistlock fixing to suit shipping container cast corners.

## Product Description

A twistlock mounted support bracket to suit shipping containers providing lateral restraint when alighting from the ladder.

### LIMITATIONS:

The CLB20 Container Ladder Bracket is not to be utilised by more than one person on the ladder at any one time nor should it be used or modified for use as a fall arrest/restraint device. The bracket is not to have any additions applied to it such as vertical lines and is not to be used for the permanent mounting of ladders.

### COMPOSITION AND MATERIALS:

The CLB20 Container Ladder Bracket is composed of 2 mm powder coated steel.



## Installation Instructions

Following is a general summary of the installation method. If there is any doubt as to the surety or application of this Container Ladder Bracket please contact Secure Anchor Systems.

### APPLICATION & FASTENING:

The CLB20 Container Ladder Bracket can be secured with torque wrench.

1. Insert twistlock head with bracket arm in horizontal position in container cast corner.
2. Rotate bracket arm into vertical (standing) position.
3. Tighten M12 bolt to specified torque: 24 Nm
4. Tie-off ladder with rope through bracket hole.

## Technical Data

Weight (approx):	1.2 Kg
Dimensions (overall):	500mm x 80mm x 80mm nominal
Fixing Torque:	24 Nm

## Maintenance

The CLB20 Container Ladder Bracket should be checked annually at the very least by a 'competent' person. Ensure that the Ladder Bracket is firmly secured to the container and not loose with the locking nut to tightened to the specified torque as detailed in Technical Data above.

Ensure all safety equipment to be used in conjunction with the Ladder Bracket is checked prior to use.

**Secure Anchor Systems** recommends that all ladder bracket installers & users be 'competent' in accordance with AS 1891, relevant Codes of Practice and applicable OH&S acts in your state.

**Secure Anchor Systems** always recommends placement of ladder brackets using a 'fall restraint' methodology and working in a 'fall restraint' mode when working at heights.

### Distribution by: Shingles Supply Pty Ltd

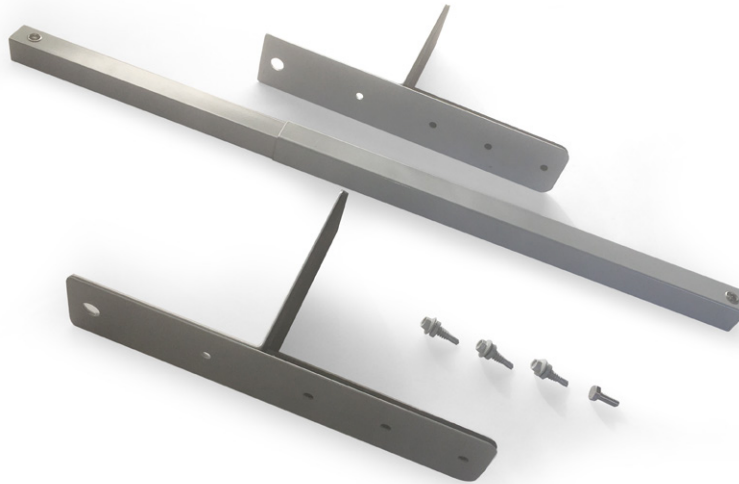
Australia & International  
Order: 1300 131 881  
Enquires: +61 2 9317 3553  
PO Box 1346 Moss Vale NSW 2577

[shinglessupply.com.au](http://shinglessupply.com.au)



**SHINGLES  
SUPPLY**

Roofing products & safety equipment



**Secure Anchor Systems** recommends that all anchor / ladder bracket installers & users be 'competent' in accordance with AS 1891, relevant Codes of Practice and applicable OH&S acts in your state.

**Secure Anchor Systems** always recommends placement of anchors using a 'fall restraint' methodology and working in a 'fall restraint' mode when working at heights.

## Product Description

A ladder bracket with adjustable ladder rest and fixings to suit shipping containers.

A surface mounted stainless steel roof support bracket to suit right angled metal cappings/fascia with a minimum base metal thickness (BMT) of 0.42mm providing lateral restraint when alighting from the ladder or a roof plane.

### LIMITATIONS:

The *Ladder Bracket* is not to be utilised by more than one person on the ladder at any one time nor should it be used or modified for use as a fall arrest/restraint device. The bracket is not to have any additions applied to it such as vertical lines and is not to be used for the permanent mounting of ladders.

### COMPOSITION AND MATERIALS:

The *C-LB-F Container Ladder Bracket Fixed* is composed of 304 Stainless Steel in a powder coated finish. The bracket utilises 6 screws to surface mount the brackets with an EPDM self adhering separation strip.

### APPLICABLE STANDARDS:

Australian/New Zealand Standard 1891.4



## Technical Data

Weight (approx):	980 Grams
Dimensions (overall):	400mm x 270mm x 25mm nominal
Screw Fixings:	6 off 15-15x25mm Hex Head HG Seal Metal Batten Tekes 2 off M6 x 12mm 304 Stainless steel Hex Machine Head Screw

## Maintenance

The *C-LB-F Container Ladder Bracket Fixed* should be checked annually at the very least by a 'competent' person. Ensure that the *C-LB-F Container Ladder Bracket Fixed* is firmly attached to the roof and not loose with the use of all screw fixings as detailed in Technical Data above. Ensure all safety equipment to be used in conjunction with the *C-LB-F Container Ladder Bracket Fixed* is checked prior to use.

## Installation Instructions

Following is a general summary of the installation method. If there is any doubt or non surety as to the application of this anchor in accordance with these instructions please contact Secure Anchor Systems.

### APPLICATION & FASTENING:

Fix horizontal bar in place with the 6mm Stainless Steel bolts and nutserts on either of the bracket face. If the ladder bracket is of the adjustable type (*C-LB-F*), align the bar horizontally with the corresponding adjustment holes.

The EPDM separation strip adhered to the underside of brackets must be intact when fixing to the barge capping.

Fix brackets to capping using the 25mm metal batten tekcs. Fix the three screws to each face then adjacent face.

Ensure that all screws are firmly fixed but NOT overtightened with all washers in tact under the heads of the screws.

**Distribution by:**  
**Shingles Supply Pty Ltd**  
Australia & International  
Order: 1300 131 881  
Enquires: +61 2 9317 3553  
PO Box 1346 Moss Vale NSW 2577  
[shinglessupply.com.au](http://shinglessupply.com.au)



**SHINGLES  
SUPPLY**  
Roofing products & safety equipment