

### The Corrugator™ LP06 fall arrest roof anchor

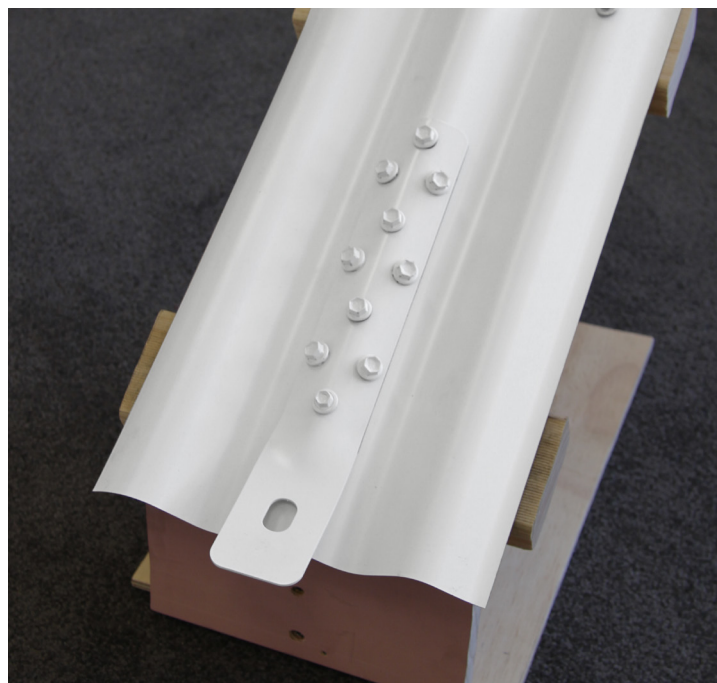


## Product Description

A surface mounted stainless steel roof anchor to suit standard corrugated iron roof sheeting, with a minimum base metal thickness (BMT) of 0.42mm, providing height safety in fall arrest and restraint applications.

### LIMITATIONS:

The anchor is not to be utilised by more than one person at any time nor be subject to a load of more than 15kN in accordance with AS/NZS 1891.4 (Table 3.1). At no stage must the worker subject to the anchor, any loads from above *The Corrugator™* on the roof plane. The anchor can only ensure fall restraint/arrest in a downward direction, ie. **WORK BELOW THE ANCHOR AT ALL TIMES!** Do not work in a fashion that will apply a load perpendicular to *The Corrugator™*.



## Technical Data

Weight (approx.):	174 g (+ fixings 242 g)
Dimensions (overall):	300mm x 50mm x 1.5mm
Screw Fixings:	<b>Timber:</b> 1 off 40mm or 50mm Roof Zip 9 off 15-15x25mm Hex Head HG Seal Metal Batten Tekes
	<b>Metal:</b> 1 off 40mm or 50mm Roof Zip 9 off 15-15x25mm Hex Head HG Seal Metal Batten Tekes

### COMPOSITION AND MATERIALS:

*The Corrugator™* is composed of 304 Stainless Steel. *The Corrugator™* utilises 10 screws to surface mount the anchor with an EPDM, self adhering separation strip.

### APPLICABLE STANDARDS:

Australian/New Zealand Standard 1891.4

## Maintenance

*The Corrugator™* should be checked annually at the very least by a 'competent' person as required and/or detailed in Government OH&S Acts, Codes of Practice and all applicable building codes. *The Corrugator™* must also be checked prior to any attachment or use ensuring that the anchor has not been subject to any fall loads nor that it has been tampered with. Ensure that *The Corrugator™* is firmly attached to the roof and not loose with the use of all screw fixings as detailed in above. Ensure all safety equipment to be used in conjunction with *The Corrugator™* is checked prior to use.

**Distribution by:**  
**Shingles Supply Pty Ltd**  
Australia & International  
Order: 1300 131 881  
Enquires: +61 2 9317 3553  
PO Box 1346 Moss Vale NSW 2577  
[shinglessupply.com.au](http://shinglessupply.com.au)

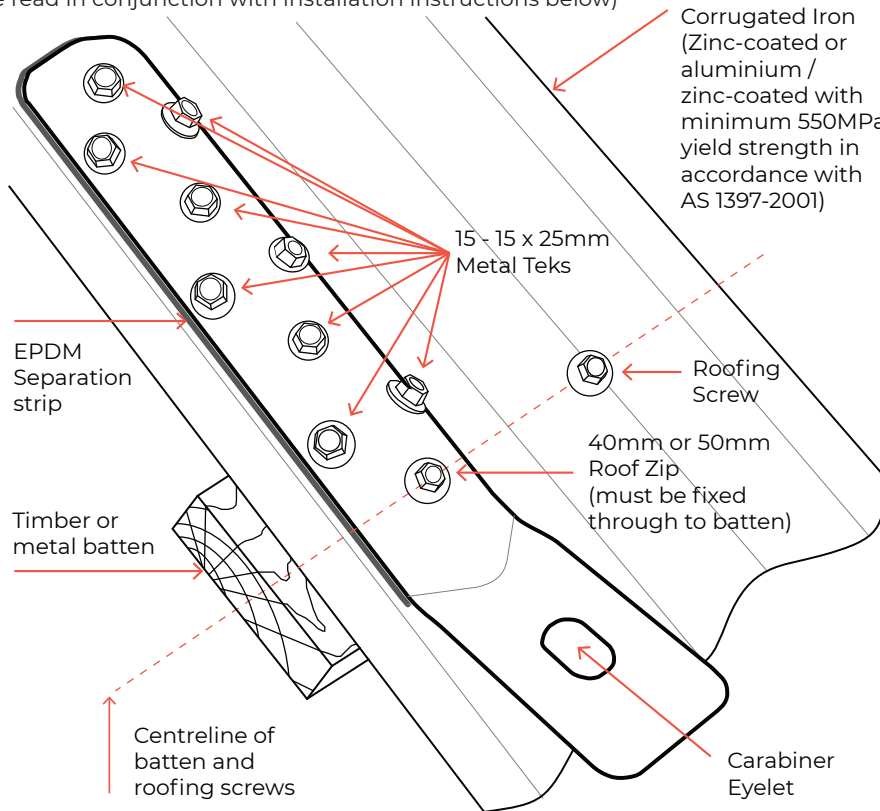


**SHINGLES SUPPLY**

Roofing products & safety equipment

### Fixing Diagram

(To be read in conjunction with installation instructions below)



### FIXING NOTES:

- *The Corrugator™* MUST be fixed into a batten through either the centred top or bottom longitudinally placed holes.
- The separation strip adhered to the underside of *The Corrugator™* must be in place when fitting the anchor.
- Place *The Corrugator™* on a ridge between existing roofing screws (DO NOT fix into existing screw penetration!)
- All remaining seven (7) holes in *The Corrugator™* must be fixed with the supplied 25mm metal batten tek's.
- Ensure that all screws are firmly fixed but NOT overtightened with all washers in tact under the heads of the screws

### Installation Instructions

Following is a general summary of the installation method. If there is any doubt as to the surety or application of this anchor please contact Secure Anchor Systems.

#### ROOF REQUIREMENTS:

Apply *The Corrugator™* to a corrugated iron roof fixed in accordance with the roof sheet manufacturer's instructions, all applicable building codes and Australian Standards. A roof sheet with minimum base metal thickness of 0.42mm (with a minimum 550MPa yield strength in accordance with AS 1397-2001) must be utilised and continually span across three battens for *The Corrugator™* to ensure fall arrest when installed in accordance with these instructions.

#### APPLICATION & FASTENING:

The EPDM separation strip provides a separation between the corrugated sheeting and the stainless steel fabric of the roof anchor ensuring a tight waterproof seal. This must also be placed to ensure no reaction will occur between the stainless steel anchor and the roof sheeting. Ensure that EPDM separation strip is adhered to the roof anchor.

Ten (10) screws are required to be used on *The Corrugator™* roof anchor. Four holes are centred on the anchor, one at the top and one at the bottom with three pairs of holes running down each side of the stem. The one (1) M6 x 50mm Roof Zip is required to be fastened through either the top or bottom centred hole into a roofing batten that has a minimum strength grade of MGPI0. Place the anchor over a corrugation between an existing line of screw fixings in the roof sheet. DO NOT remove an existing screw fixing and place the anchor in that same position utilising the existing hole. The roof zip may be fastened through either the top or bottom centre hole depending on the ability to comfortably place *The Corrugator™* in position on the roof sheet. With the remaining nine (9) Metal Batten Tek screws, fix them through the remaining holes into the roof sheet. Ensure that the Metal Batten Tek's are secured firmly against the anchor and the roof sheet so there is no movement. DO NOT overtighten the screws as they

may strip the thread and compromise the screw's holding power and shear strength in the event of a fall. We suggest using a torque setting commonly available on cordless drills.

DO NOT use/reuse existing roof screws to fasten *The Corrugator™*. DO NOT use any other screws than those supplied or specified above. DO NOT reuse any screws nor the holes of an existing application if a '*Corrugator™*' is removed.

#### FLASHING:

*The Corrugator™* requires no additional flashings nor sealing other than the application of the enclosed EPDM self adhering sealing/separation strip. You may apply a bead of sealant around the perimeter of the anchor if there is any unsurety as to water resistance.

*Secure Anchor Systems* recommends that all anchor installers & users be 'competent' in accordance with AS 1891, relevant Codes of Practice and applicable OH&S acts in your state.

*Secure Anchor Systems* always recommends placement of anchors using a 'fall restraint' methodology and working in a 'fall restraint' mode when working at heights.

#### Distribution by:

**Shingles Supply Pty Ltd**

Australia & International

Order: 1300 131 881

Enquires: +61 2 9317 3553

PO Box 1346 Moss Vale NSW 2577

[shinglessupply.com.au](http://shinglessupply.com.au)



**SHINGLES  
SUPPLY**

Roofing products & safety equipment